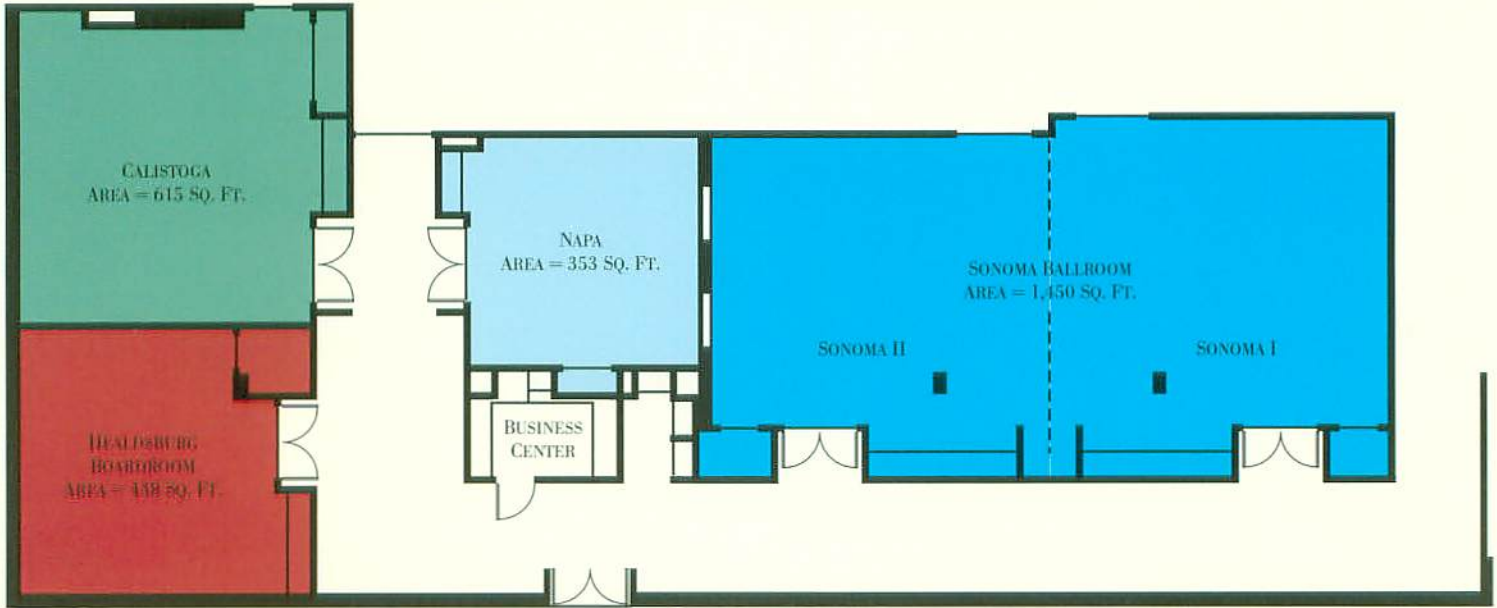


Meeting & Banquet Facilities



Meeting Space Information

Over 2,856 square feet of flexible meeting/banquet space.

Largest single room capacity is 100 people.

Healdsburg Boardroom



Sonoma Ballroom



Meeting and Banquet Room Specifications

Room	Square Feet	Approximate Dimensions	Ceiling Heights	Reception	Banquet	Theatre	Class Room	U-Shape	Conference	Hollow Square
Sonoma Ballroom	1,450	24' x 56'	9'-2"	100	90	88	72	56	76	52
Sonoma I	658	24' x 28'	9'-2"	50	48	36	24	24	36	24
Sonoma II	658	23' x 29'	9'-2"	50	48	36	24	24	36	24
Calistoga	615	25' x 25'	8'-2"	50	42	32	22	24	30	18
Healdsburg	438	20' x 21'	8'-2"	-	-	-	-	-	12	-
Napa	353	18' x 19'	8'-2"	25	24	20	16	18	16	12

Hilton  **San Francisco Fisherman's Wharf**

2620 Jones Street ♦ San Francisco, California 94133 ♦ 1-800-228-8408 ♦ www.hilton.com

Facts at the Hilton.

- ◆ 234 Spacious and Comfortable Rooms and Suites
- ◆ Meeting and banquet facilities
- ◆ Valet and self-parking garage
- ◆ Vintner's Grill and Vintner's Bar
- ◆ 24-hour self-service business center
- ◆ 24-hour fitness center
- ◆ Complimentary limousine service to Financial District (M-F)

Just a few blocks away to:

- ◆ PIER 39 and Fisherman's Wharf Attractions
- ◆ Alcatraz
- ◆ Bay Cruises
- ◆ Ghirardelli Square
- ◆ The Cannery
- ◆ Adjacent to famous North Beach restaurants & clubs

Just a few minutes away to:

- ◆ Golden Gate Bridge
- ◆ The Financial District
- ◆ Union Square Shopping area
- ◆ The Moscone Convention Center
- ◆ The new PacBell Park Baseball Stadium
- ◆ Chinatown

Convenient access to transportation:

Cable cars, lightrail, streetcars, taxis, and Muni buses



It happens at the Hilton.™



2620 Jones Street
(at Bay Street)
San Francisco, California 94133

Telephone (415) 885-4700
Facsimile (415) 351-1924

For Meetings and Banquets
space information please call:
(415) 268-5944

For room reservations please
call 1-800-228-8408

www.hilton.com

Hilton SFOFW GDS Codes:

Sabre/Worldspan	120
Apollo	55120
Amadeus	SFO169

Hilton San Francisco Fisherman's Wharf

